



FLOAT™ round suspending panel light

DL-055-AW-01



Description

FLOAT™ round suspending panel light is designed with stylish and fashionable lamp body, and with edge-lit LED emitting technology. It has the feature of uniform and smooth light beam, and can be widely used as interior lighting in shops, showrooms, offices, hotels and so on.

Features

1. Round frame adopt extrusion aluminum, better for heat dissipation, higher hardness, strong structure, have big advantage in large dimension lamp;
2. Lamps of different diameters can be customized;
3. Energy-saving, eco-friendly, no UV, no IR or mercury free, RoHS compliant;
4. High lighting effect, uniform light-emitting surface, no ripple;
5. Brand power supply, quality assurance;
6. Compact appearance, simple and beautiful;
7. Combine originalities of different round lamps, various shapes can be posed to present art of lamps and lanterns.



Specifications

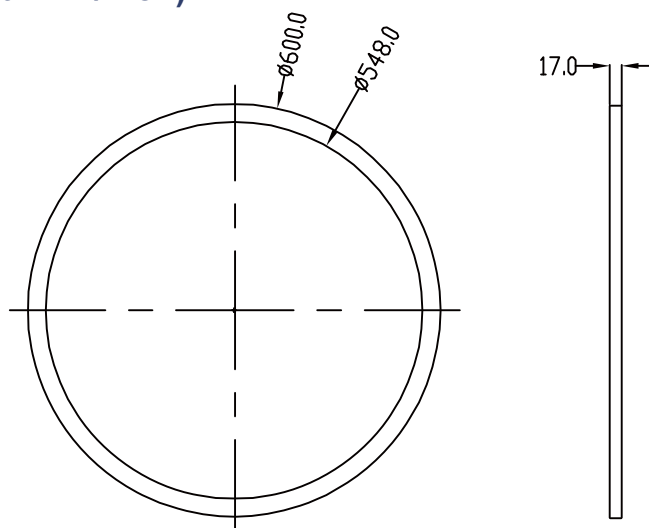
Model	CCT	Color	Lumen(lm) ($\pm 10\%$)	LED Type	LED Qty.	Beam angle	Power(W) ($\pm 10\%$)	Voltage (V)	Current (A)	CRI	PF
DL-055-AW-01WW	2800-3200K	warm white	4550	SMD2835	384pcs	110°	55W	AC200-240V 50/60Hz	0.5	>80	>0.9
DL-055-AW-01NW	3800-4200K	nature white	5000	SMD2835	384pcs	110°					
DL-055-AW-01CW	6000-6500K	cool white	4750	SMD2835	384pcs	110°					

Applications

600mm diameter round panel light is suitable for living room, company front desk, conference room, interior corridor, shopping mall, exhibition, warehouse, station, subway and other indoor places.

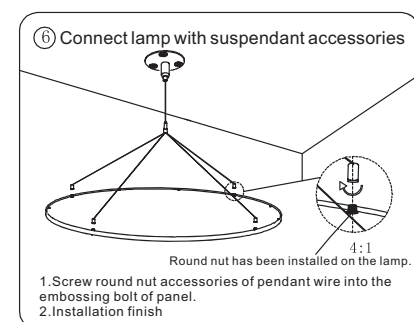
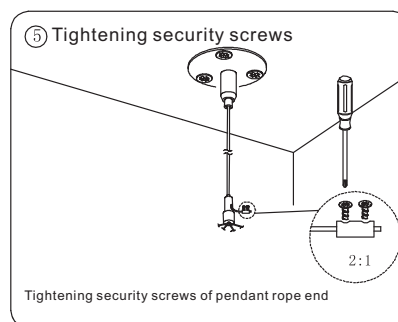
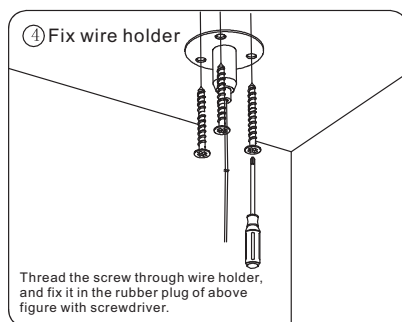
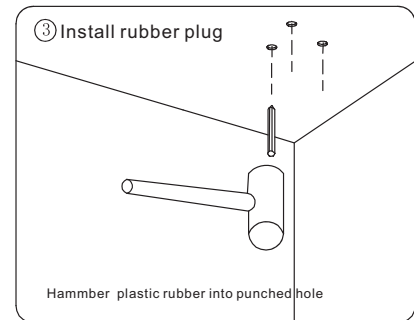
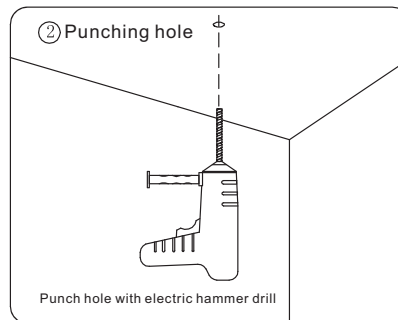
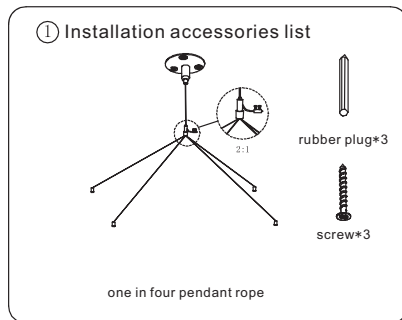


Dimensions (Unit: mm/inch)





Installation Drawing



Product packaging information:

Net weight: 4.38kg

Gross weight: 4.4kg

Single packing dimension: 635*686*52mm (1 pcs/box)

External packing dimension: 650*230*715 mm (4 pcs/carton, gross weight: 23.4kg)

Installation requirement

1. Power off before installation;
2. Fix the rubber plug, self-tapping screws of pendant wire holder on the installing surface;
3. Lock another end by M5 clamp head on the embossing bolt , and tightening it;
4. Adjust length of pendant wire according operating environment, installation finish.

! Notice

1. Please first read the product specification carefully, make sure the using environment conform to specification, then it can be used;
2. Please confirm the input voltage,frequency before use;
3. This product must be installed by professionals;
4. Dangerous high voltage, non-professionals are not allowed to maintain the product;